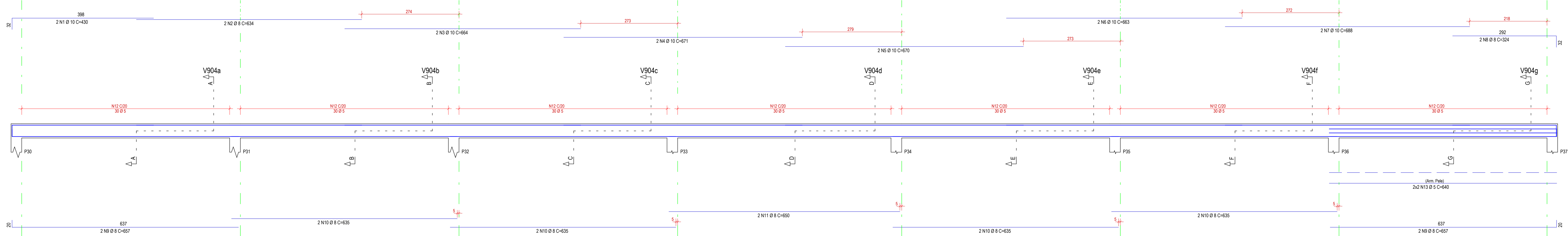


V904

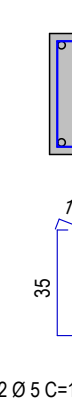
15/40



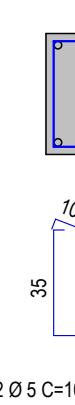
Corte A



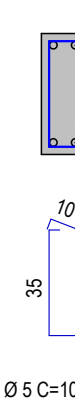
Corte B



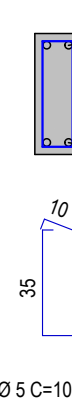
Corte C



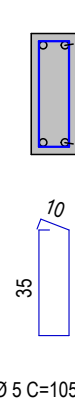
Corte D



Corte E



Corte F

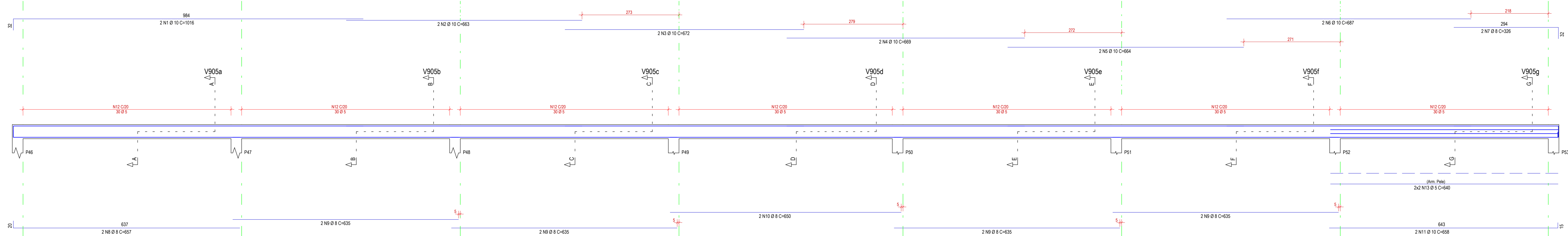


Corte G



V905

15/40



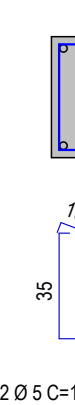
Corte A



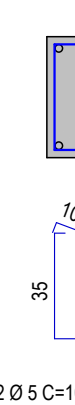
Corte B



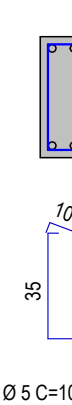
Corte C



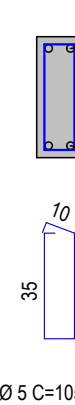
Corte D



Corte E



Corte F

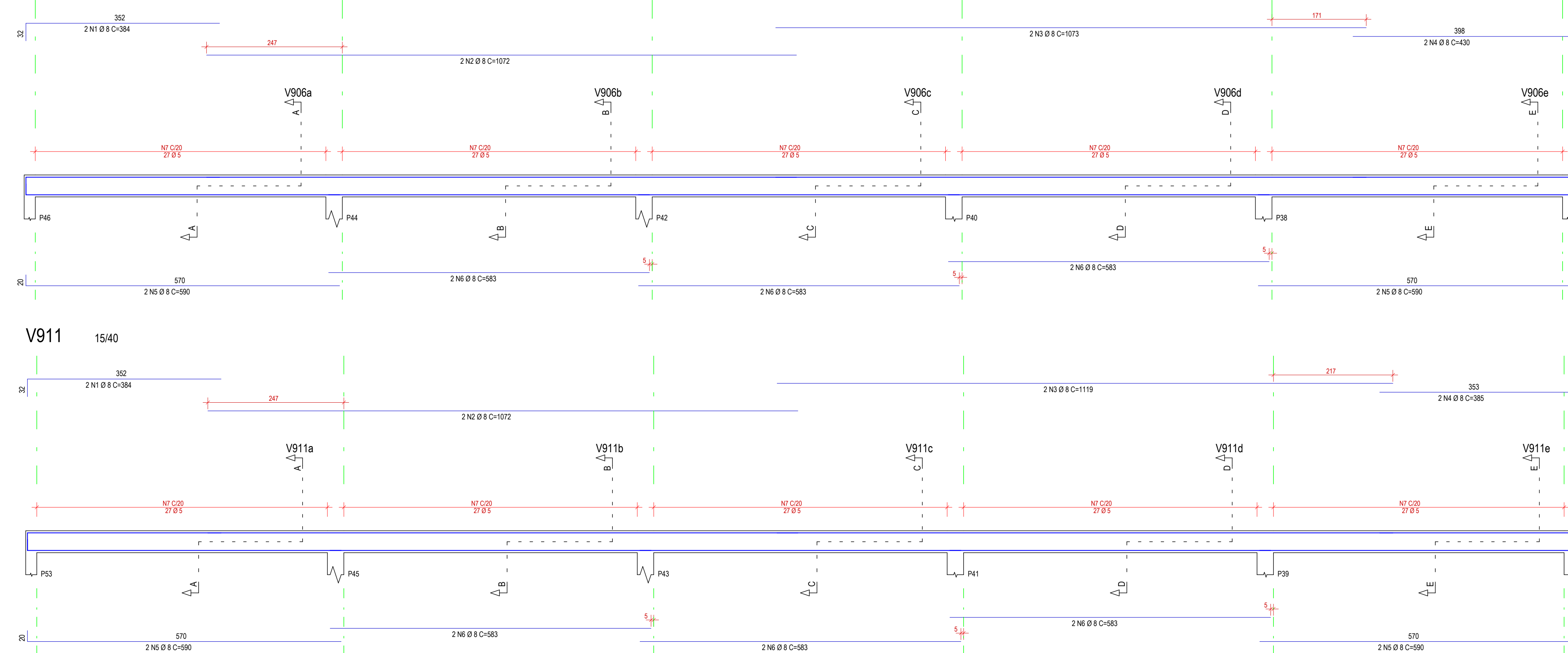


Corte G



V906

15/40



Corte A



Corte B



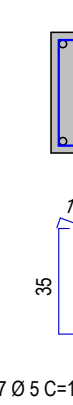
Corte C



Corte D

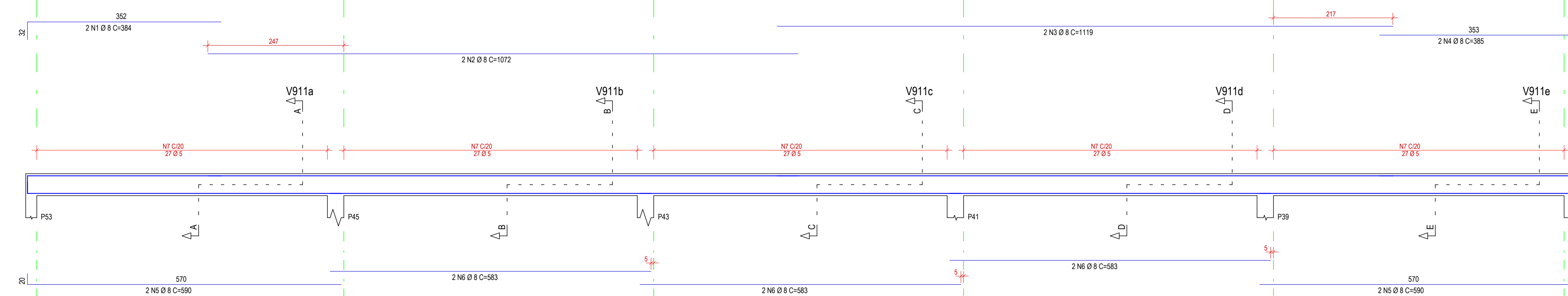


Corte E



V911

15/40



Corte A



Corte B



Corte C



Corte D



Corte E



| AÇO  | POS | BIT<br>(mm) | QUANT | COMPRIMENTO  |               |
|------|-----|-------------|-------|--------------|---------------|
|      |     |             |       | UNIT<br>(cm) | TOTAL<br>(cm) |
| V904 | 50A | 1           | 10    | 430          | 860           |
|      | 50A | 2           | 8     | 634          | 1268          |
|      | 50A | 3           | 10    | 684          | 1328          |
|      | 50A | 4           | 10    | 671          | 1342          |
|      | 50A | 5           | 10    | 670          | 1340          |
|      | 50A | 6           | 10    | 663          | 1326          |
|      | 50A | 7           | 10    | 688          | 1376          |
|      | 50A | 8           | 8     | 324          | 648           |
|      | 50A | 9           | 8     | 4            | 687           |
|      | 50A | 10          | 8     | 635          | 5080          |
|      | 60B | 11          | 8     | 2            | 650           |
|      | 60B | 12          | 5     | 210          | 105           |
|      | 60B | 13          | 5     | 4            | 640           |
| V905 | 50A | 1           | 10    | 1016         | 2032          |
|      | 50A | 2           | 10    | 663          | 1326          |
|      | 50A | 3           | 10    | 672          | 1344          |
|      | 50A | 4           | 10    | 669          | 1338          |
|      | 50A | 5           | 10    | 664          | 1328          |
|      | 50A | 6           | 10    | 687          | 1374          |
|      | 50A | 7           | 8     | 2            | 326           |
|      | 50A | 8           | 8     | 2            | 657           |
|      | 50A | 9           | 8     | 8            | 635           |
|      | 50A | 10          | 8     | 2            | 650           |
|      | 50A | 11          | 10    | 2            | 658           |
|      | 60B | 12          | 5     | 210          | 105           |
|      | 60B | 13          | 5     | 4            | 640           |
| V906 | 50A | 1           | 8     | 384          | 768           |
|      | 50A | 2           | 8     | 1072         | 2144          |
|      | 50A | 3           | 8     | 2            | 1073          |
|      | 50A | 4           | 8     | 2            | 430           |
|      | 50A | 5           | 8     | 4            | 590           |
|      | 50A | 6           | 8     | 6            | 583           |
|      | 60B | 7           | 5     | 135          | 105           |
| V911 | 50A | 1           | 8     | 384          | 768           |
|      | 50A | 2           | 8     | 2            | 1072          |
|      | 50A | 3           | 8     | 2            | 1119          |
|      | 50A | 4           | 8     | 2            | 385           |
|      | 50A | 5           | 8     | 4            | 590           |
|      | 50A | 6           | 8     | 6            | 583           |
|      | 60B | 7           | 5     | 135          | 105           |

| RESUMO AÇO CA 50-60 |             |              |
|---------------------|-------------|--------------|
| AÇO                 | BIT<br>(mm) | PESO<br>(kg) |
| 60B                 | 5           | 776          |
| 50A                 | 8           | 428          |
| 50A                 | 10          | 170          |
| Peso Total 60B =    |             | 119 kg       |
| Peso Total 50A =    |             | 278 kg       |

Exo. Faces  
Volume de concreto de VIGAS (m³) 8.5 8.1  
Taxa de armadura (kg/m³) 46.5 49.0

CONCRETO 35 Mpa

|    |            |     |                      |       |
|----|------------|-----|----------------------|-------|
| 04 |            |     |                      |       |
| 03 |            |     |                      |       |
| 02 |            |     |                      |       |
| 01 |            |     |                      |       |
| 00 | 24/08/2020 | LÉO | EMISSÃO INICIAL - EX | QAE   |
| Nº | DATA       | DES | MODIFICAÇÃO          | AUTOR |

|   |  |   |  |
|---|--|---|--|
|  |  |  |  |
| CAR   |  | TÍTULO  |  |
| CONCRETO ARMADO   |  | PROJETO DE ESTRUTURAS EM CONCRETO ARMADO  |  |
| AUTOR PROJ.   |  | LÓ  |  |
| OLIVEIRA ARAÚJO   |  | DR - SESC-TO  |  |
| DES.  |  | GERA  |  |
| OLIVEIRA ARAÚJO   |  | CENTRO DE ATIVIDADES - SESC GURUPI - 2ª FASE  |  |
| DATA  |  | END:  |  |
| 24/08/2020  |  | RUA 03, LOTEAMENTO PARK FILÓ MOREIRA  |  |
| ESC.  |  | FOLHA   |  |
| INDICADA  |  | ÁREA EM FOCO  |  |
|   |  | EST - 062   |  |

Nº DO ARQUIVO: EST-232-A01-EX-062-CAR-GIN-VIG-CRE-R00